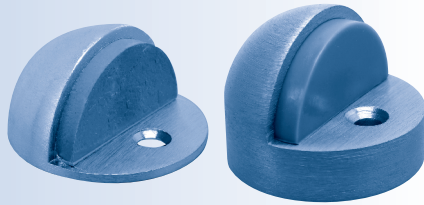
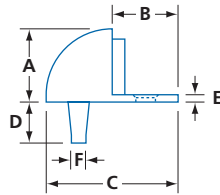


DOME DOOR STOP



T200 - LOW DOME

T218 - HIGH DOME



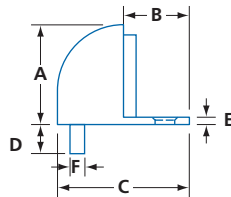
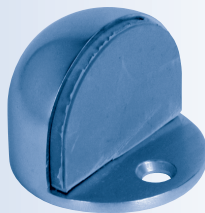
- Mounting hardware included: wood screw with anchor



#T201 - 1/4" (6.4mm) RISER

MODEL NUMBER	MATERIAL	FINISH	A	B	C DIA	D	E	F DIA	PER BOX	PER CASE	CASE WEIGHT LBS / KG
T200	Zinc die-cast	C3, C4, C26D	1 (25.4)	7/8 (22.2)	1 3/4 (44.5)	3/4 (19.1)	3/32 (2.4)	3/16 (4.8)	10	200	34.8 / 15.0
T218		C4, C26D	1 7/16 (36.5)				1/2 (12.7)				41.8 / 19.5
T201		C26D	N/A	N/A		N/A	1/4 (6.4)	N/A			50

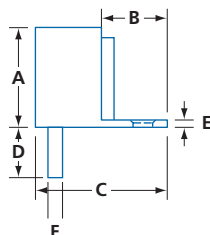
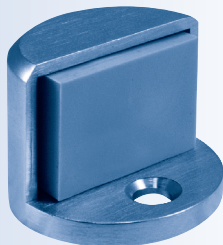
HIGH-LOW DOME DOOR STOP



- Mounting hardware included: wood screw with anchor

MODEL NUMBER	MATERIAL	FINISH	A	B	C DIA	D	E	F DIA	PER BOX	PER CASE	CASE WEIGHT LBS / KG
C229	Zinc die-cast	C26D	1 7/16 (36.5)	13/16 (20.6)	1 3/4 (44.5)	7/16 (11)	1/8 (3.2)	7/32 (5.6)	10	200	43.0 / 19.5

HIGH-LOW SPRING STOP



- Spring loaded non-marking rubber stop
- Mounting hardware included: wood screw with anchor

MODEL NUMBER	MATERIAL	FINISH	A	B	C DIA	D	E	F DIA	PER CASE	CASE WEIGHT LBS / KG
C230	Zinc die-cast	C19, C26D	1 1/2 (38)	45/64 (18)	1 7/16 (36.5)	15/16 (24)	1/4 (6.4)	1/4 (6.4)	100	35.2 / 16.0

Dimensions unless specified otherwise are: Inches (Millimeters)