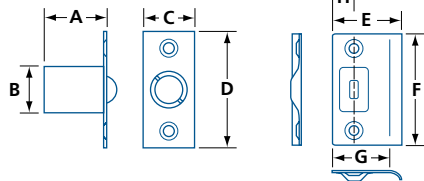


DOOR CATCHES & LATCHES

GENERAL HARDWARE

BALL CATCH

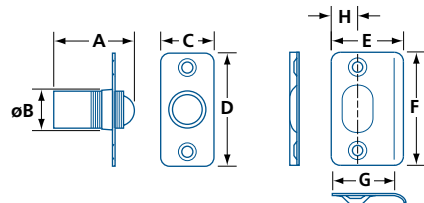


- For wood door and frame
- Strike included for 1 3/8" (35 mm) thick door
- Mounting hardware included: wood screws

MODEL	FINISH	MATERIAL	A	ø B	C	D	E	F	G	H	/BOX
01013	C3, C5, C15A, C26, C26D	Steel	1 3/16 (30.1)	27/32 (21.5)	1 (25.4)	2 1/4 (57)	1 7/16 (36.5)	2 1/8 (54)	1 3/16 (30)	1/2 (12.7)	50

IN (MM)

BALL CATCH – ADJUSTABLE

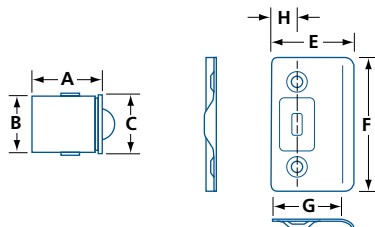
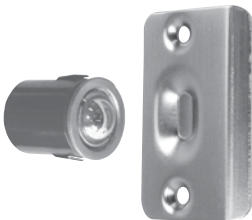


- For wood door and frame
- Adjustable spring tension
- Adjustable for frame gap to 3/16" (5 mm)
- Strike for 1 3/8" (35 mm) doors; 3/16" (5 mm) rounded corners
- Mounting hardware included: wood screws
- Brass body and faceplate
- Steel ball and strike

MODEL	FINISH	MATERIAL	A	ø B	C	D	E	F	G	H	/BOX
01014	C3, C10B, C15, C15A, C19, C26D	Brass	1 1/16 to 1 1/4 (27 to 31.8)	25/32 (19.8)	1 (25.4)	2 1/8 (54)	1 3/8 (35.4)	2 1/8 (54)	1 3/16 (30)	1/2 (12.7)	20

IN (MM)

BALL CATCH – DRIVE IN



- For wood door and frame
- Zinc die-cast body, with steel ball and strike
- Fits into 1" (25.4 mm) bore
- Strike for 1 3/8" (35 mm) doors; 7/32" (5 mm) rounded corners
- Mounting hardware included: wood screws

MODEL	FINISH	MATERIAL	A	ø B	ø C	E	F	G	H	/BOX
01003	C10B, C11P, C15 C19, C26, C26D	Zinc die-cast	1 3/16 (30.1)	15/16 (23.8)	1 (25.4)	1 3/8 (34.9)	2 1/4 (57)	1 3/16 (30)	1/2 (12.7)	50

IN (MM)

