

## BEFORE PROCEEDING:

1. Read the installation instructions prior to installing the leverset.
2. Confirm that the backset of the leverset is the same as the door backset. If not adjust the leverset backset as shown in section 1.
3. Confirm handing of leverset (LH or RH) can accommodate the door.

## TOOLS REQUIRED:

For wooden door preparation:

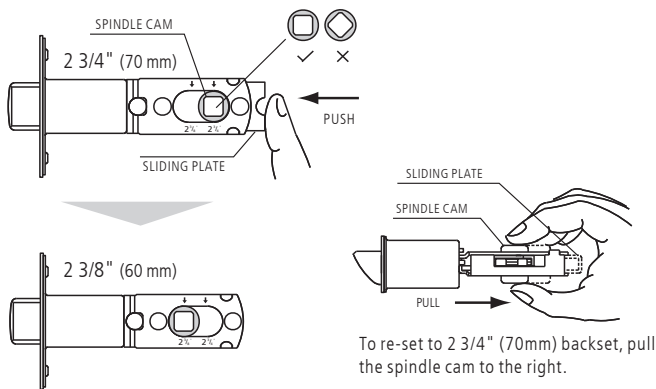
- Electric drill
- 2 1/8" and 1" diameter wood drill
- 1" chisel

For leverset installation:

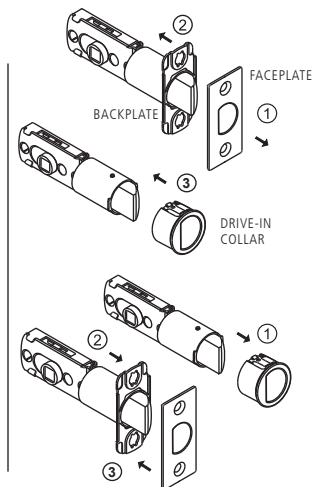
- Philips screwdriver
- Soft faced hammer

## 1. ADJUSTABLE SPRING LATCH

Adjustable latch was preset at the factory for a 2 3/4" (70mm) backset .  
If a 2 3/8" (60 mm) backset is required please adjust as shown below.



To re-set to 2 3/4" (70mm) backset, pull the spindle cam to the right.



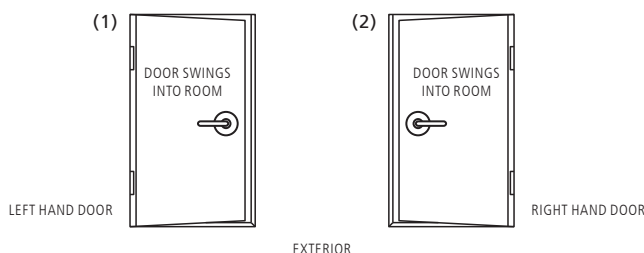
### Convert from MORTISE to DRIVE-IN:

1. Use a flat screwdriver to separate the faceplate from the latch backplate
2. Slide back the backplate to remove it
3. Align the round drive-in collar with the latch bolt and push it on the latch until it snaps-in.

### Convert from DRIVE-IN to MORTISE:

1. Use a small flat screwdriver to release the snapping of the drive-in collar on the latch and pull the collar forward to remove it
2. Slide-on the backplate from the back of the latch
3. Snap the faceplate on to the backplate

## 2. DETERMINE HANDING OF YOUR DOOR



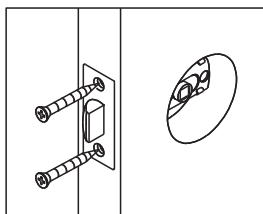
Stand on the exterior, outside the room, facing the door

- (1) The door is left hand door if hinges are installed on your left and door swings into the room
- (2) The door is right hand door if hinges are installed on your right and door swings into the room

## 3. DOOR PREPARATION

<p>(A)</p> <p>a. Position the horizontal center line of the template at the height of 36" (914mm) to 38" (965mm) from the finished floor, fold template on the corner of the door and mark the center of the hole on the door edge.</p> <p>b. Select 2 3/8" (60mm) or 2 3/4" (70mm) backset as desired and mark center of the hole on the face of the door.</p>	<p>(B)</p> <p>1" (25mm) HOLE FOR LATCH</p> <p>2 1/8" (54mm) HOLE</p> <p>a. Saw-cut 2 1/8" (54mm) diameter hole on door. Saw-cut from both sides to prevent splitting of wood.</p> <p>b. Drill 1" (25.4mm) diameter hole for mortise type latch (ensure that the hole center is at the 1/2 of the door thickness point).</p> <p>c. For drive-in type latch drill a 25mm (or undersized 1") hole.</p>	<p>(C)</p> <p><b>MORTISE LATCH FACEPLATE</b> (If applicable)</p> <p>a. Insert latch in hole and position face plate vertically on door edge. Mark outline of face plate and remove latch.</p> <p>b. Chisel 1/8" (3mm) deep or until face plate is flush with door edge.</p>
---	---	---

## 4. INSTALL LATCH

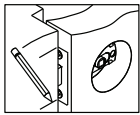
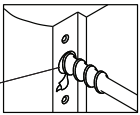
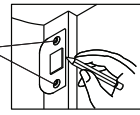


- a. For drive-in latch, fit latch into latch hole on door edge, ensuring latch is at the correction orientation
- b. For mortise latch, Insert latch (ensuring latch is at the correction orientation), predrill mounting screw holes and attach with supplied screws.

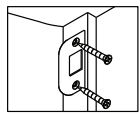
# TECNICA DESIGN LEVERSET INSTALLATION INSTRUCTIONS & TEMPLATE

D O R E X

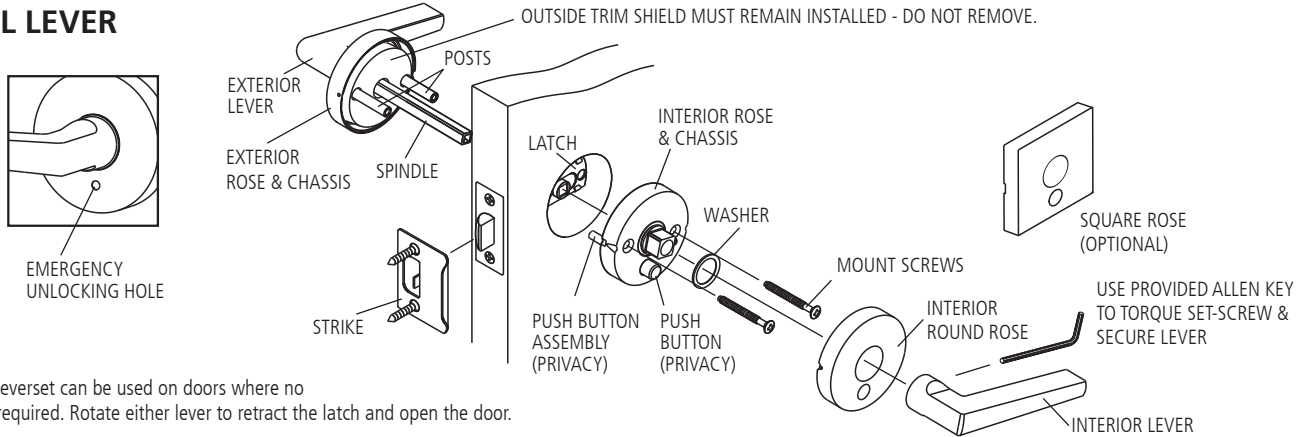
## 5. FRAME PREPARATION

- (A) 
- a. Close door until latch touches jamb to locate strike on jamb and center line of strike.
- b. Open door and extend line from mark to frame jamb.
- c. Measure 1/2 of door thickness from door stop and mark vertical center line for strike. Measure mid point and mark drill point center for strike along vertical center line.
- (B) 
- DRILL POINT FOR STRIKE
- Drill 1" (25.4 mm) hole 1/2" (13mm) deep in door jamb at drill point
- CAUTION:** To assure proper lockset function, hole in jamb must be drilled a full 1/2" (13mm) deep.
- (C) 
- SCREW HOLES
- a. Locate the strike cutout centrally over the 1" (25.4mm) hole on frame jamb.
- b. Mark outline of strike on frame jamb and chisel 1/16" (1.6mm) deep for strike.

## 6. INSTALL STRIKE

- 
- a. Install strike and tighten screws.
- b. Adjustable tang on strike permits bending in or out to eliminate gaps between door and door stop.
- c. Verify that latch bolt fits properly into the strike opening.

## 7. INSTALL LEVER



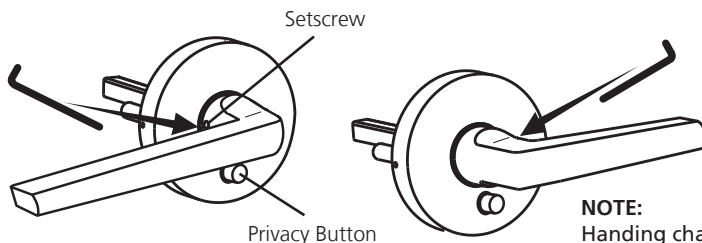
PASSAGE function leverset can be used on doors where no locking function is required. Rotate either lever to retract the latch and open the door.

For PRIVACY function leverset depress push button on interior rose to lock exterior lever. Emergency unlocking is possible from outside through hole on exterior rose. Rotating interior lever will retract the latch, release the exterior lever and open the door.

## 8. PRIVACY LEVER HANDING CHANGE (ROUND ROSE)

### INSIDE LEVER

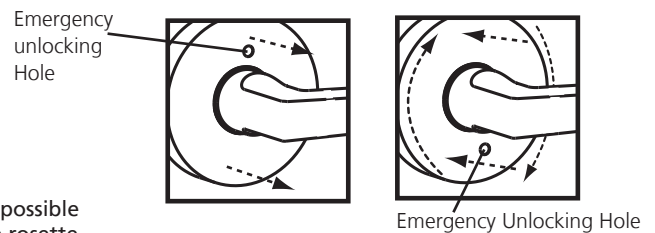
Unfasten setscrew on inside lever and pull out and rotate lever 180° and secure with setscrew



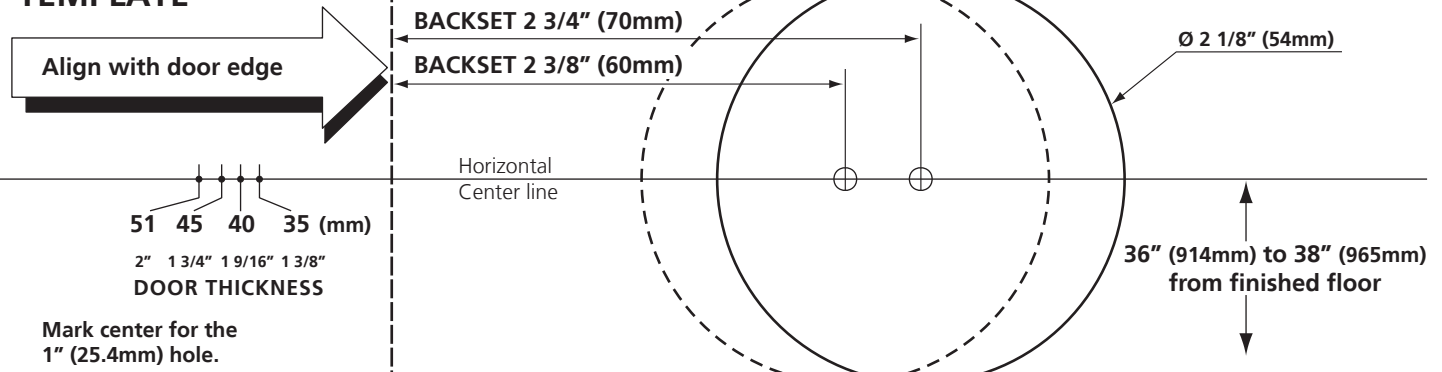
**NOTE:**  
Handing change not possible on levers with square rosette

### OUTSIDE LEVER

Pull out rosette slightly on outside lever and rotate 180 degrees aligning hole on rosette with hole on chassis to accommodate new handle position. Push rosette inward until fit is snug.



## TEMPLATE



**CAUTION NOTE:** Prior to using template, verify template is full scale by measuring any one of the backset dimensions.