

Reference Line

Top Bracket

Top Pivot

1 to 1 3/4" (25 to 44.5 mm)

7/8" (22 mm) Top Pivot radius

Bottom Pivot

Cylinder and Cam

Bottom Bracket

Door Jamb

90°

Finished Floor

⚠ Read all instructions before starting the installation and use the illustration as a visual guide.

1. Before beginning, mark the desired reference line on the door jamb as shown to help keep pivots aligned.

2. Round the door edge facing the door jamb to a 7/8" (22 mm) radius.

3. Install top pivot onto the door's top edge, centered to the door thickness and flush to the rounded edge as shown.

4. Install the bottom pivot to the door's bottom edge in the same way with its sloped edge facing **AWAY** from the door jamb as shown on Figure 1.

5. Position the bottom pivot bracket at the desired height from the finished floor on the marked pivot line. Fasten bracket in place with appropriate fasteners.

6. Insert the cylinder cam to the bottom bracket with its sloped edge facing **TOWARDS** the door jamb as shown in Figure 1. Tighten the screw for a snug fit. Do not over-tighten.

7. Place the door's bottom pivot into the bottom pivot bracket and use the door's top edge to position top bracket along the same pivot line 3/4" (19 mm) higher than the height of the door (see Figure 1). Fasten bracket in place with appropriate fasteners.

8. Verify door opening and closing operation.

⚠ Top and bottom pivot brackets must be aligned with each other.

**NOTE:** Bottom door pivot can be installed into a cutout in the door as shown in Figure 2.

⚠ Remember never over tighten nut, only hand tighten to a snug fit.

⚠ To help with door alignment shims may be used on bottom bracket to help rotate door in or out.

TOP PIVOT

2 1/8" (54 mm)

1 15/32" (37.3 mm)

7/16" (11.1 mm)

7/8" (22.2 mm)

1/4" DIA (6.4 mm) For #10 screws

1 1/16" (27 mm)

7/16" DIA (11.2 mm)

5/32" (4 mm)

1 1/4" (32 mm)

TOP BRACKET

1 7/32" (31 mm)

1 27/32" (47 mm)

7/32" DIA (5.5 mm) For #10 screws

5/8" (16 mm)

3/16" (5 mm)

5/16" (8 mm)

3/8" (9 mm)

1 1/4" (32 mm)

1 27/32" (47 mm)

3/16" (5 mm)

5/8" (16 mm)

1 1/4" (32 mm)

BOTTOM PIVOT

1 15/32" (37.3 mm)

1 1/8" DIA (28.6 mm)

2 1/8" (54 mm)

5/8" (16 mm) MAXIMUM RISE TRAVEL

5/32" (4 mm)

1 25/32" (45.5 mm)

2 7/16" (62 mm)

1 15/16" (49 mm)

1 1/16" (27 mm)

(10 mm X 1.5 mm) THREAD

BOTTOM BRACKET

1 27/32" (47 mm)

1 7/32" (30.9 mm)

0.510 SQUARE (13 mm)

7/32" DIA (5.5 mm)

5/8" (16 mm)

3/16" (5 mm)

5/16" (8 mm)

3/8" (9.5 mm)

1 1/4" (31.8 mm)

1 27/32" (47 mm)

3/16" (5 mm)

1 1/4" (31.8 mm)

PARTS

#10 x 1" - (8) Screws

Bottom Pivot

Bottom Assembly of Bracket with Cylinder

Top Bracket

Top Pivot

TOP PIVOT

2 1/8" (54 mm)

1 15/32" (37.3 mm)

7/16" (11.1 mm)

7/8" (22.2 mm)

1/4" DIA (6.4 mm) For #10 screws

1 1/16" (27 mm)

7/16" DIA (11.2 mm)

5/32" (4 mm)

1 1/4" (32 mm)

TOP BRACKET

1 7/32" (31 mm)

1 27/32" (47 mm)

7/32" DIA (5.5 mm) For #10 screws

5/8" (16 mm)

3/16" (5 mm)

5/16" (8 mm)

3/8" (9 mm)

1 1/4" (32 mm)

1 27/32" (47 mm)

3/16" (5 mm)

5/8" (16 mm)

1 1/4" (32 mm)

BOTTOM PIVOT

1 15/32" (37.3 mm)

1 1/8" DIA (28.6 mm)

2 1/8" (54 mm)

5/8" (16 mm) MAXIMUM RISE TRAVEL

5/32" (4 mm)

1 25/32" (45.5 mm)

2 7/16" (62 mm)

1 15/16" (49 mm)

1 1/16" (27 mm)

(10 mm X 1.5 mm) THREAD

BOTTOM BRACKET

1 27/32" (47 mm)

1 7/32" (30.9 mm)

0.510 SQUARE (13 mm)

7/32" DIA (5.5 mm)

5/8" (16 mm)

3/16" (5 mm)

5/16" (8 mm)

3/8" (9.5 mm)

1 1/4" (31.8 mm)

1 27/32" (47 mm)

3/16" (5 mm)

1 1/4" (31.8 mm)

DOOR BOTTOM MOUNTED PIVOT

TOP BRACKET

1 7/32" (30.9 mm)

TOP PIVOT ASSEMBLY

TRAVEL 5/8" (16 mm)

3/4" (19 mm)

REQUIRED CLEARANCE FOR OPERATION

DOOR TOP EDGE

5/32" (4 mm)

Figure 1

DOOR BOTTOM EDGE

BOTTOM PIVOT

CYLINDER ASSEMBLY

HOLD-OPEN FEATURE (OPTION)

BOTTOM BRACKET

1 7/32" (31 mm)

DOOR BOTTOM RECESSED MOUNTED PIVOT

TOP BRACKET

TOP PIVOT ASSEMBLY

TRAVEL 5/8" (16 mm)

3/4" (19 mm)

REQUIRED CLEARANCE FOR OPERATION

DOOR TOP EDGE

5/32" (4 mm)

Figure 2

BOTTOM PIVOT ASSEMBLY

BOTTOM BRACKET

CUT-OUT HEIGHT TO SUIT INSTALLATION

FINISHED FLOOR

DOOR BOTTOM EDGE

DOOR CUT-OUT IF BOTTOM PIVOT CAN NOT BE INSTALLED ON THE DOOR BOTTOM EDGE

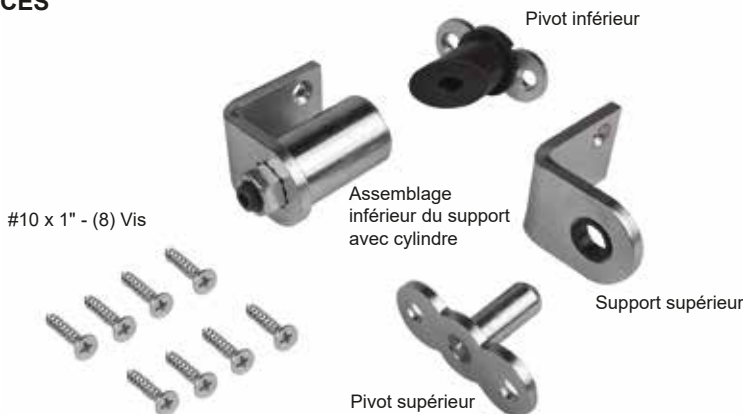
1 7/32" (31 mm)

2 7/16" (62 mm)

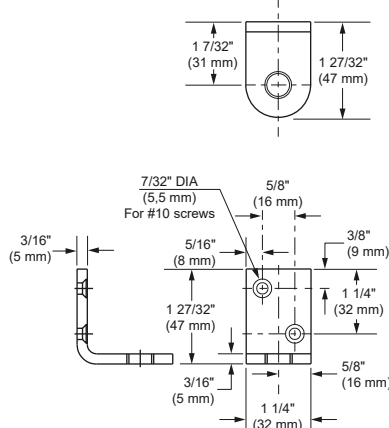
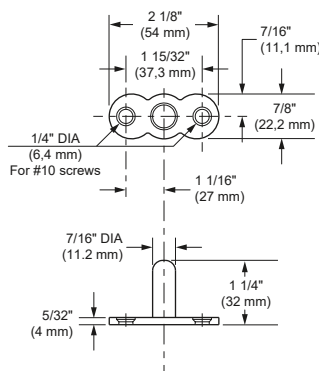
7512P-INS 2024-05

## PIVOT DE GRAVITÉ

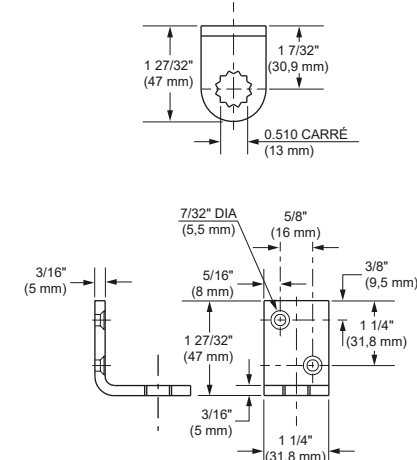
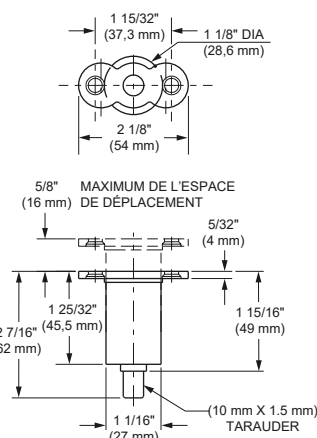
### INSTRUCTIONS D'INSTALLATION



## SUPPORT SUPÉRIEUR



## SUPPORT INFÉRIEUR



## INSTALLER LE PIVOT ENCASTRÉ AU BAS DE LA PORTE

