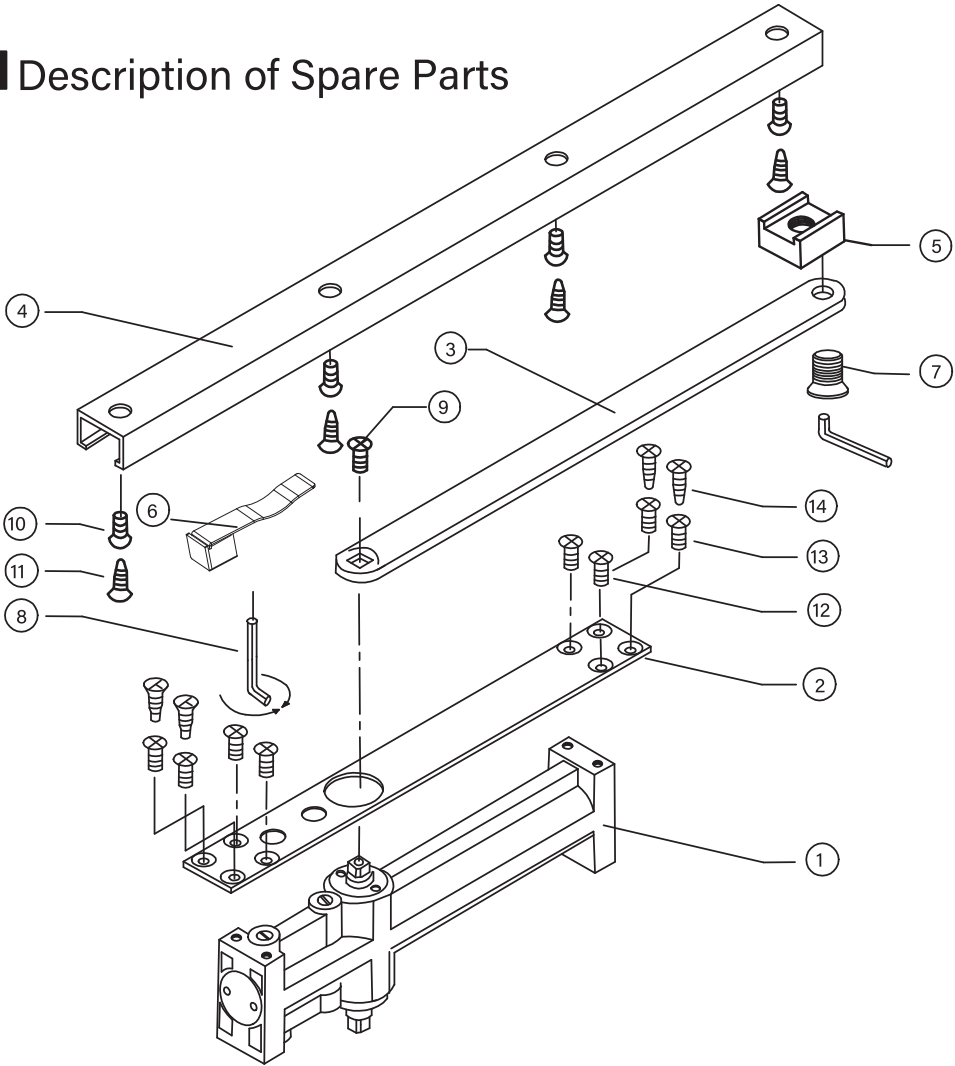


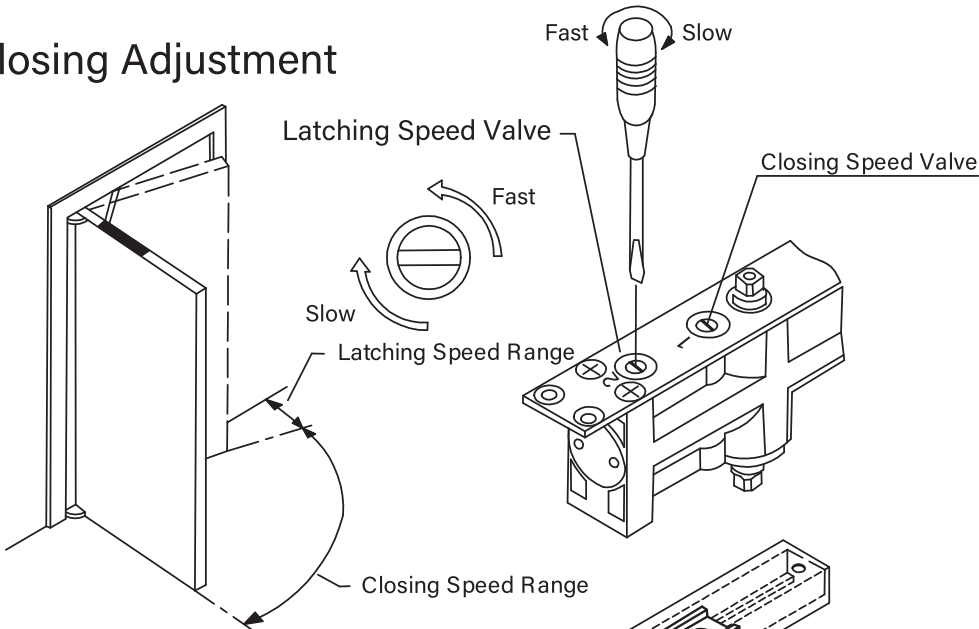
Description of Spare Parts



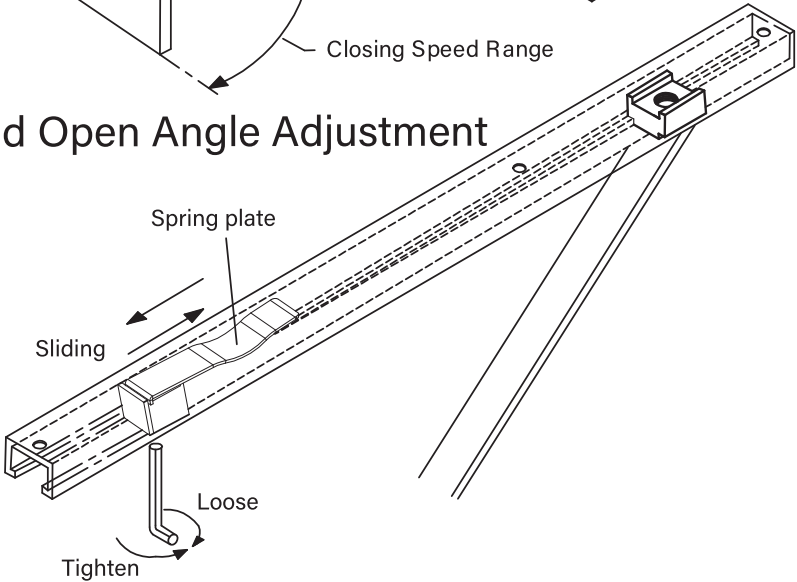
NO	Description	Q'TY
①	Body	1
②	Mounting Plate	1
③	Main Arm	1
④	Slide Track	1
⑤	Slider	1
⑥	Hold Open Module (optional)	1
⑦	⊙Fixing Bolt M8X1	1
⑧	⬡Hex Spanner 5mm	1
⑨	⊕Screw M6x12L	1
⑩	⊕Screw M5x0.8x16L	4
⑪	⊕Wood Screw #10x1"L	4
⑫	⊕Screw M5x0.8x8L	4
⑬	⊕Screw M5x0.8x16L	4
⑭	⊕Wood Screw #10x1"L	4

⚠ DO NOT INSTALL HOLD OPEN ON FIRE-RATED DOOR

Closing Adjustment



Hold Open Angle Adjustment



Non-Handed

Installation Steps

① Mounting Plate Installation

⊕ Wood screw #10x1"L or
⊕ Screw M5x0.8x16L
⊕ Screw M5x0.8x8L
Mounting Plate
Body

Left Hand Installation Shown

CAUTION: Please fully close the regulating valves (turn clockwise until closed) on the opposite side (bottom) of the door closer after installing the mounting plate. The chamfered holes should be facing up, for a flush finish with mounting screws.

② Installation of Slide Track

Hold Open Module + Spring Plate
⊕ Screw M5x0.8x16L
⊕ Wood Screw #10x1"L
Slide Track

③ Main Arm Installation to the Body

Main Arm
Screw

④ Main Arm Connection to the Slide Track

⊙Fixing Bolt M8x1

⑤ Opening Angle and Closing Speed Adjustment (120° maximum)

Fast
Slow

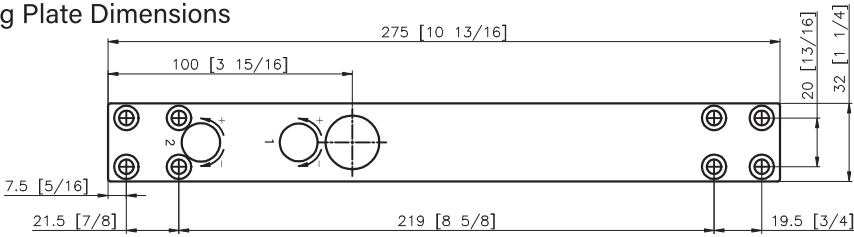
DOREX® DC3033

INSTALLATION INSTRUCTIONS

■ Standard Mounting for LEFT HAND (LH) shown from **PUSH SIDE**. For RIGHT HAND (RH) use the same dimensions. Installation for 120° door opening.

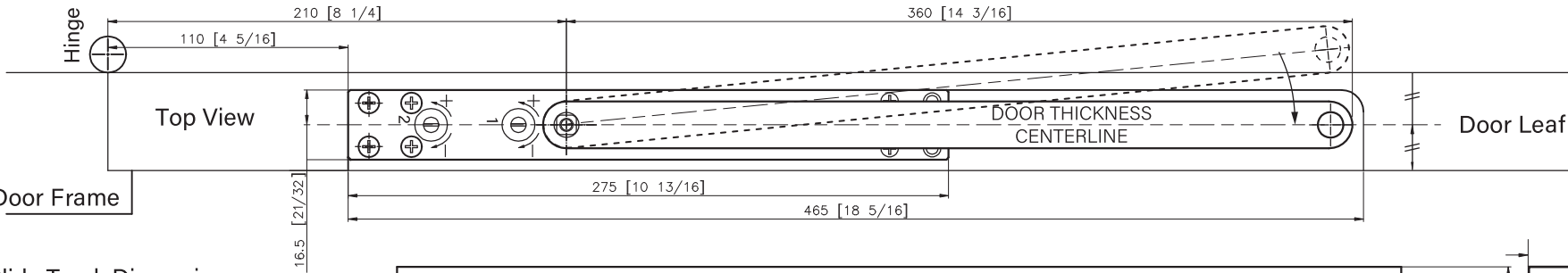
mm (inches)

Mounting Plate Dimensions

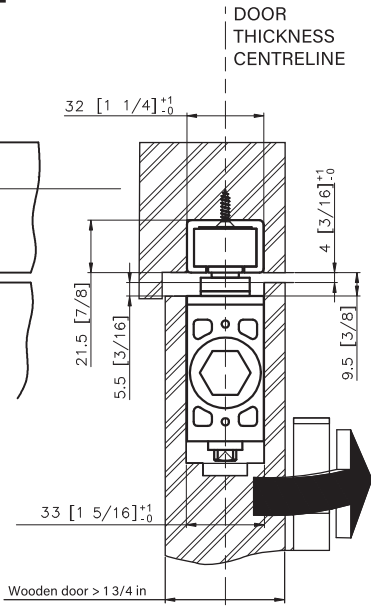
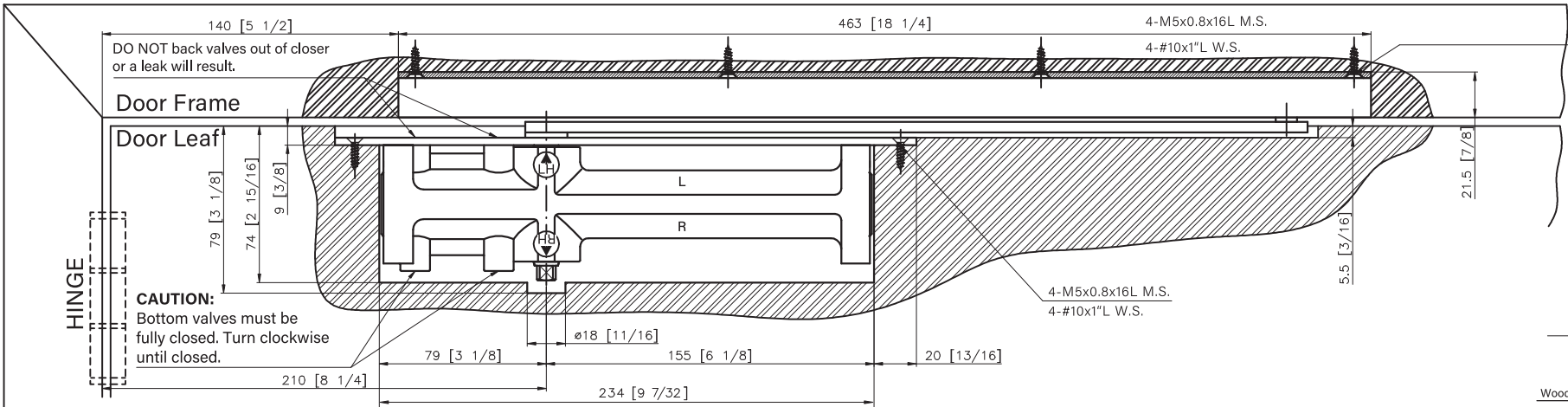
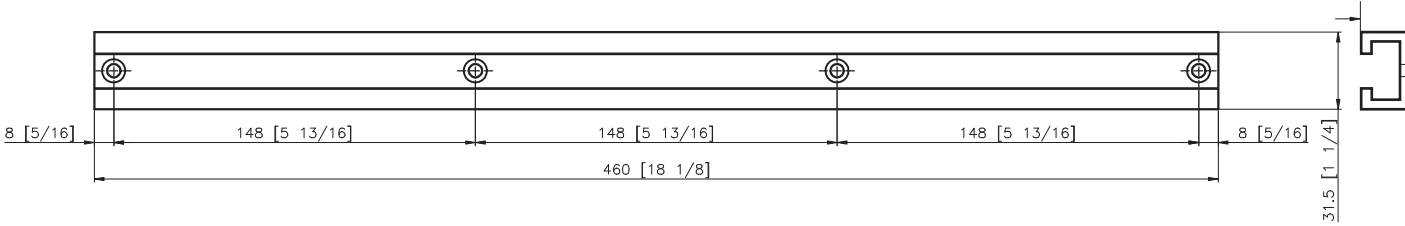


NOTE:
Mounting plate must be installed correctly for the required door handing. Before installation, ensure mouting plate is installed on the correct side. Look for indication on door closer body, L for left hand door, R for right hand door.

Top View

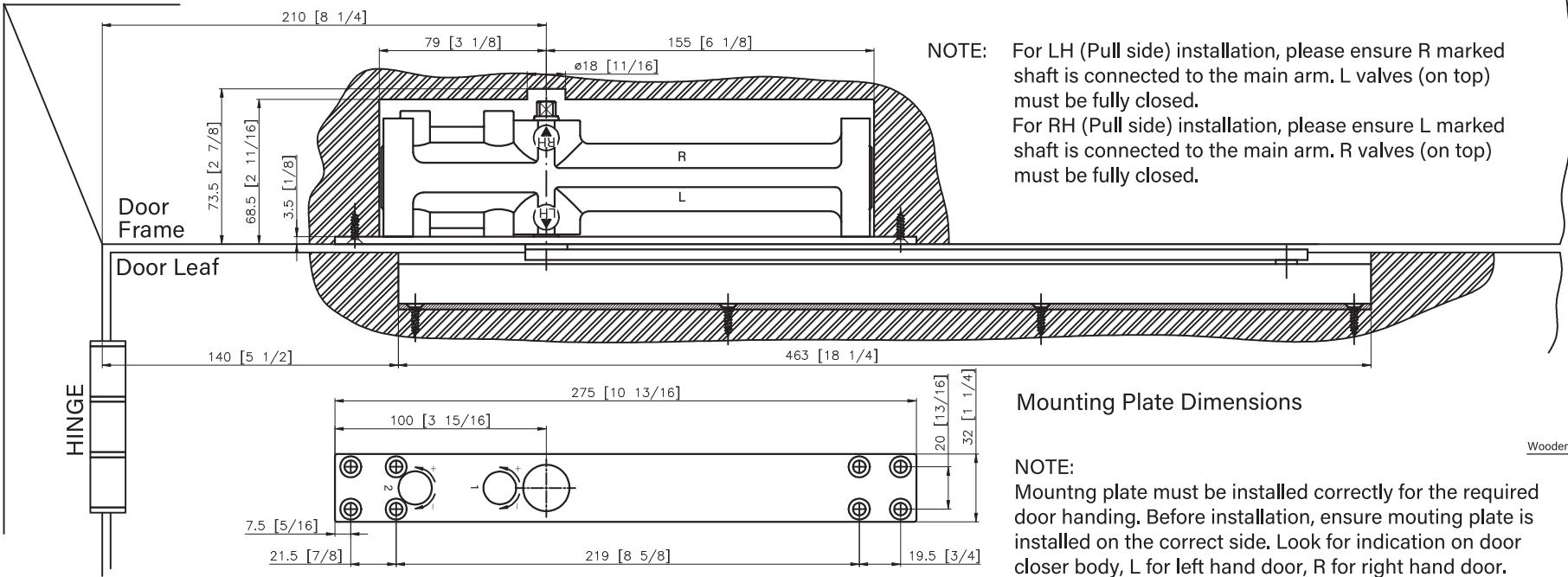


Slide Track Dimensions

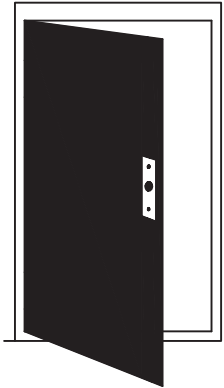
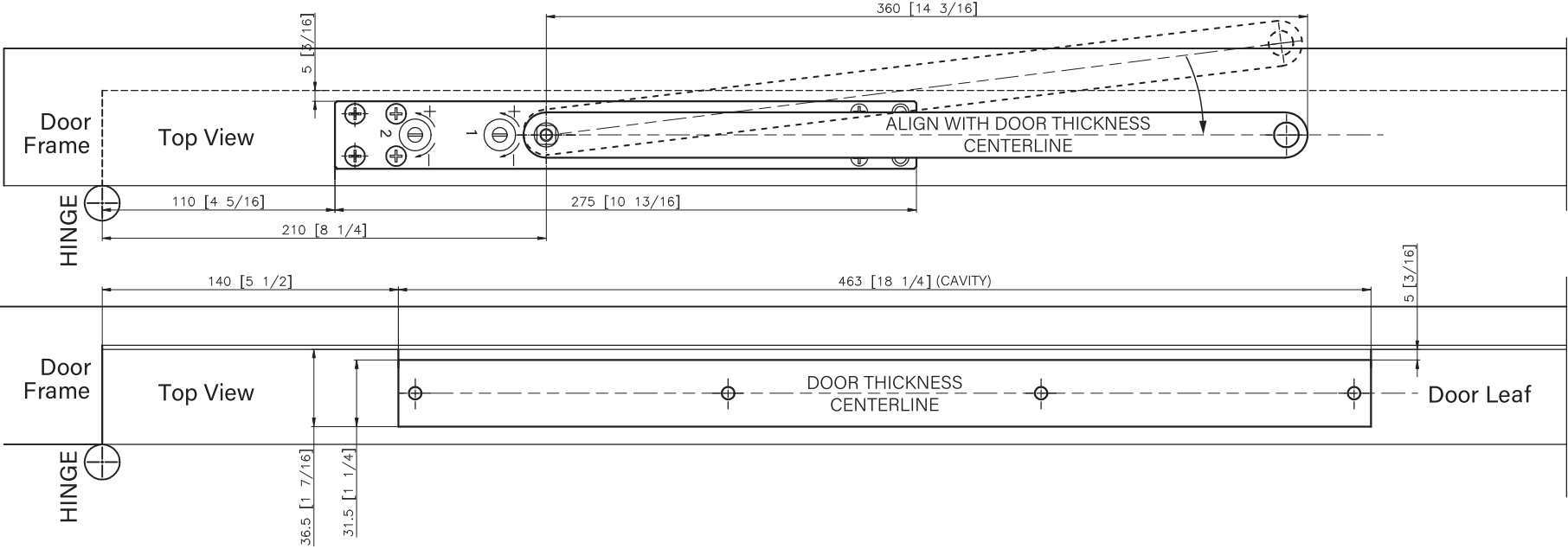
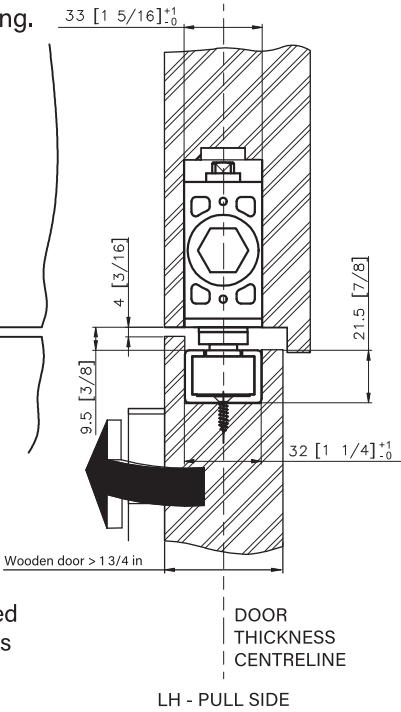


NOTE: For LH (Push side) installation, please ensure L marked shaft is connected to the main arm. R valves (on bottom) must be fully closed.
For RH (Push side) installation, please ensure R marked shaft is connected to the main arm. L valves (on bottom) must be fully closed.

■ Top Jamb Mounting for LEFT HAND (LH) shown from **PULL SIDE**. For RIGHT HAND (RH) use the same dimensions. Installation for 120° door opening.



NOTE: For LH (Pull side) installation, please ensure R marked shaft is connected to the main arm. L valves (on top) must be fully closed.
For RH (Pull side) installation, please ensure L marked shaft is connected to the main arm. R valves (on top) must be fully closed.



Left Hand (LH) Door Pull Side
Door Closer
Opening