

GENERAL NOTES (ALL INSTALLATIONS)

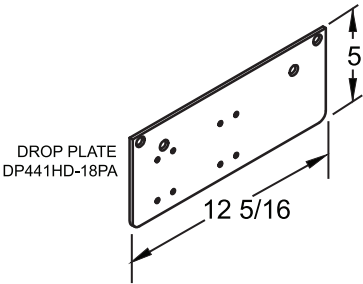
- 1. Minimum 3" high door top rail is required to mount drop plate.
- 2. Position the drop plate on the door and the door closer's parallel arm bracket on the door frame's door stop soffit at the appropriate location for the desired door opening angle.
- 3. Door closer mounting screws must finish flush with the back of the drop plate's face so that the door surface is not damaged.
- 4. The drop plate must be securely mounted on to the door using supplied or applicable mounting hardware. Wood screws require a minimum solid wood thickness of 1-1/4". Machine screws require a minimum door skin thickness of 1/8" or reinforcing material. Otherwise use through bolts with sexnuts (not included).
- 5. Mount the door closer's parallel bracket securely on to the door frame's door stop soffit using 4 machine screws. For additional rigidity install the 5th screw using the provided spacer (if required).
- 6. Complete door closer installation by refering to the installation instructions supplied with the door closer.

CONVERSION TABLES

INCH	$\frac{5}{16}$	$\frac{1}{2}$	$\frac{5}{8}$	$\frac{11}{16}$	$\frac{13}{16}$	$\frac{15}{16}$	$1\frac{1}{16}$	$1\frac{3}{16}$	$1\frac{1}{2}$
M.M.	8	13	16	17	21	24	27	30	38

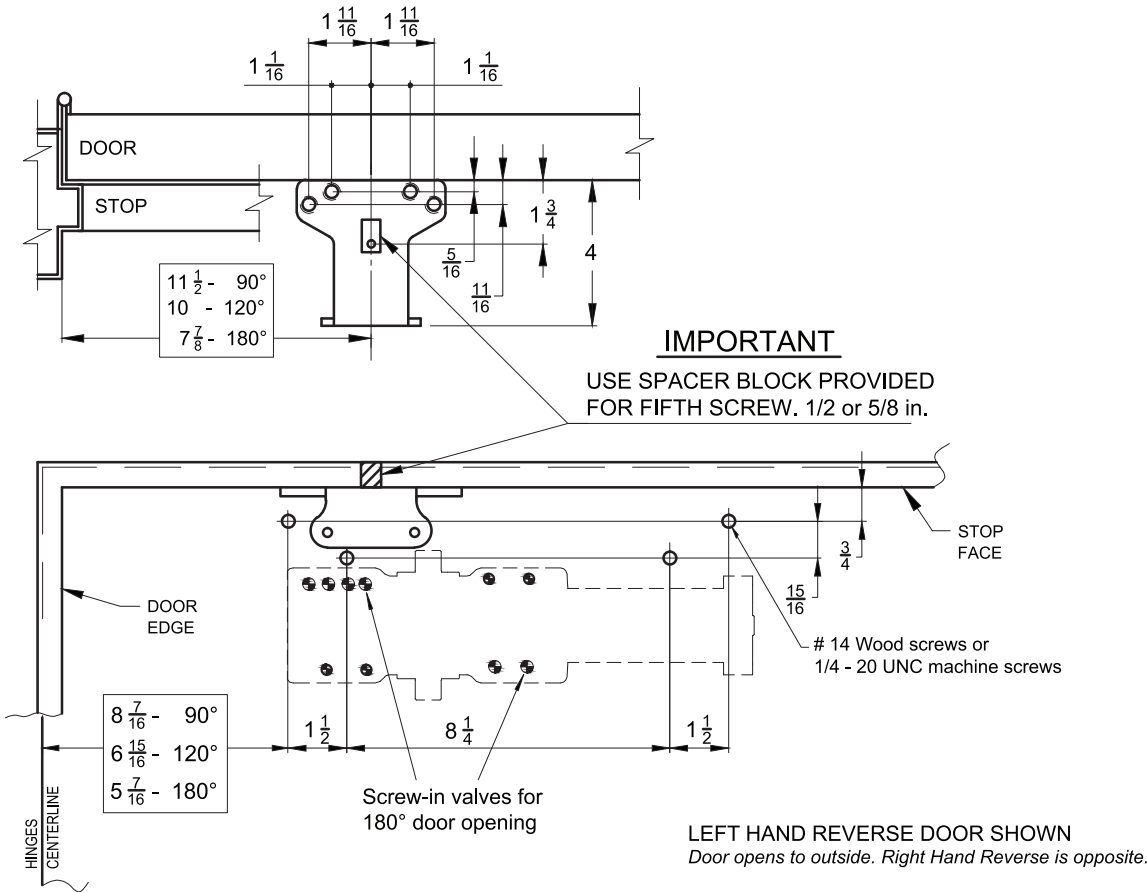
INCH	$1\frac{11}{16}$	$1\frac{3}{4}$	$2\frac{7}{8}$	$3\frac{7}{16}$	$3\frac{11}{16}$	$5\frac{1}{2}$	$5\frac{7}{8}$	$6\frac{1}{4}$	$6\frac{11}{16}$
M.M.	43	44	73	87	94	140	149	159	170

INCH	$6\frac{15}{16}$	$8\frac{1}{16}$	$8\frac{1}{4}$	$8\frac{9}{16}$	$8\frac{5}{8}$	$9\frac{1}{2}$	$9\frac{3}{4}$	$10\frac{13}{16}$	$11\frac{1}{4}$
M.M.	176	205	210	217	219	241	248	275	286



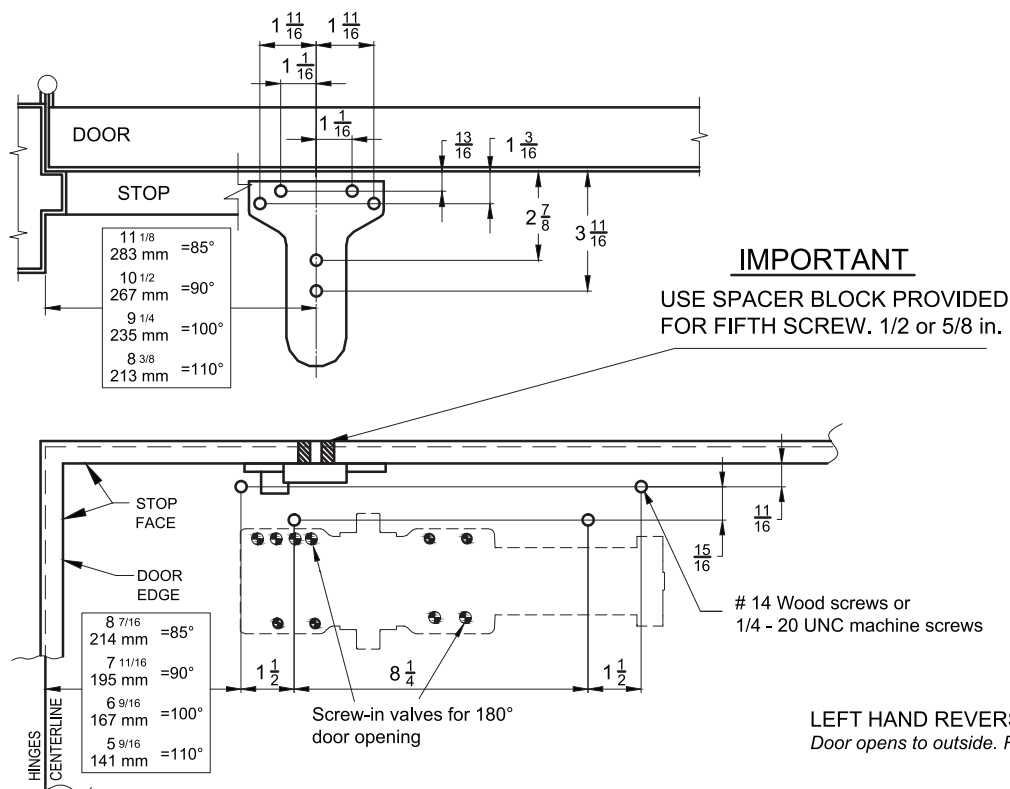
STANDARD PARALLEL ARM INSTALLATION (PUSH SIDE)

NOTE: Parallel arm bracket and mounting hardware are supplied with door closer.



CUSHION STOP ARM INSTALLATION (PUSH SIDE) - with or without hold open feature

NOTE: Cushion stop arm is supplied separately. For arm installation, please refer to the Cushion stop arm installation instructions.



EXTRA DUTY ARM INSTALLATION (PUSH SIDE) - for 110° or 180° door opening

NOTE: Extra duty arm (EDA) is supplied separately. For arm installation, please refer to the Extra duty arm installation instructions.

