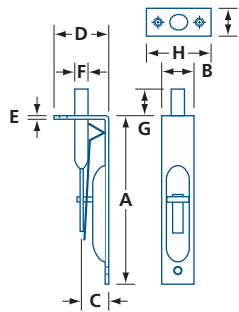


FLUSH BOLTS

GENERAL HARDWARE

4" BRASS FLUSH BOLT

8125



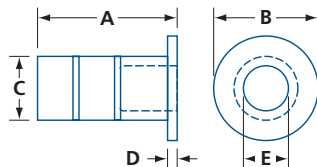
- Made of solid brass and steel materials
- Keeper included
- Mounting hardware included: wood screws

MODEL	FINISH	A	B	C (BS)	D	E	ØF	G	H	I	/BOX
8125	C26	4 (102)	¾ (19.1)	1 15/32 (11.9)	1 3/16 (30.2)	5/64 (2)	5/16 (7.9)	1 13/16 (20.6)	1 1/2 (38.1)	5/8 (15.9)	20

IN (MM)

DUST PROOF STRIKE

T840



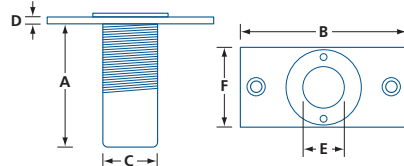
- Aluminum
- Spring loaded plunger
- Strike engagement depth up to ¾" (19mm)

MODEL	FINISH	MATERIAL	A	ØB	ØC	D	ØE	/BOX
T840	C28	Aluminum	1 7/8 (48)	1 3/8 (35)	27/32 (21.4)	1/8 (3.2)	9/16 (14.3)	25

IN (MM)

DUST PROOF STRIKE

DPS, DPSL



- Stainless steel
- Spring loaded plunger
- Strike engagement depth up to ¾" (19mm)
- Accepts 5/8" (16mm) diameter bolts
- Includes wood screws, plastic anchors
- Includes adjustment tool
- Available with locking (#DPSL) or non-locking (#DPS) plunger

MODEL	FINISH	MATERIAL	A	B	ØC	D	ØE	F	/BOX	/CASE
DPS/ DPSL	15, 26D	Stainless steel	2 (51)	2 7/8 (73)	3 1/32 (25)	1/8 (3.2)	3/4 (19)	1 3/8 (35)	10	100

IN (MM)

