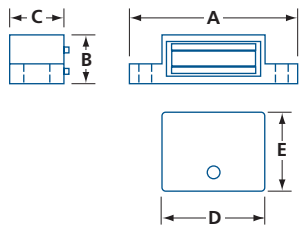
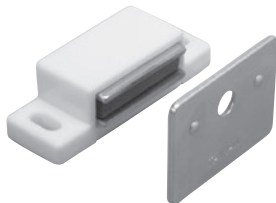


MAGNETIC CATCHES

GENERAL HARDWARE

MAGNETIC CATCH

M700



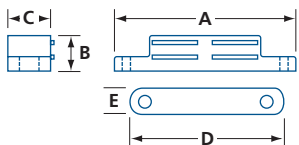
- Zinc plated steel strike
- Plastic housing with magnet
- Magnet holding capacity is 2 lbs (0.9 kg)

MODEL	FINISH	A	B	C	D	E	/BOX
M700	B, W, WA	1 3/4 (44.5)	1/2 (12.7)	9/16 (14.3)	1 3/16 (30.5)	29/32 (23)	100

IN (MM)

MAGNETIC CATCH – HIGH STRENGTH

M1800-1



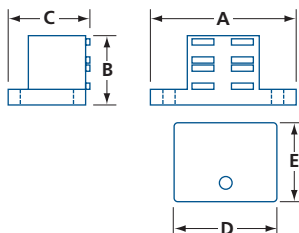
- Zinc plated steel strike
- Plastic housing with magnet
- Magnet holding capacity is 18 lbs (8 kg)

MODEL	FINISH	A	B	C	D	E	/BOX
M1800-1	White	2 7/8 (73)	9/16 (14.3)	1 1/16 (17.5)	2 3/8 (60)	1/2 (12.7)	20

IN (MM)

MAGNETIC CATCH – TALL

M2800



- Zinc plated steel strike
- Plastic housing with magnet
- Magnet holding capacity is 6 lbs (2.7 kg)
- Includes mounting screws

MODEL	FINISH	A	B	C	D	E	/BOX
M2800W	White	1 25/32 (45)	7/8 (22.2)	15/16 (24)	1 7/32 (31)	29/32 (23)	50

IN (MM)