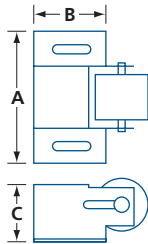
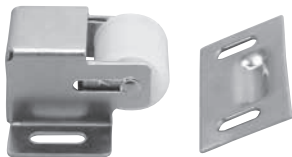


BALL & ROLLER CATCHES

GENERAL HARDWARE

BALL & ROLLER CATCHES

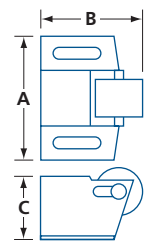


JUMBO ROLLER CATCH

- Spring loaded plastic roller
- Mounting hardware included: wood screws

| MODEL | FINISH | MATERIAL | A | B | C | /BOX |
|-------|-------------|----------|---|-------------|--|------|
| 2804 | Zinc plated | Steel | 1 ¹⁵ / ₁₆ (49.4) | 1 (25.4) | 1 ⁵ / ₁₆ (23.8) | 50 |

IN (MM)

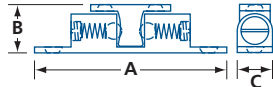
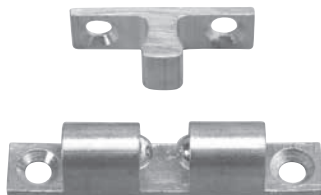


SINGLE ROLLER CATCH

- Spring loaded plastic roller
- Mounting hardware included: wood screws

| MODEL | FINISH | MATERIAL | A | B | C | /BOX |
|-------|-------------|----------|---|---------------------------|--|------|
| 950 | Zinc plated | Steel | 1 ³ / ₈ (34.9) | 3/ ₄ (19.1) | 1 ¹ / ₁₆ (17.5) | 100 |

IN (MM)

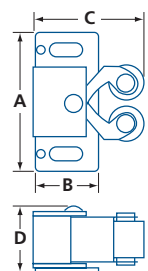
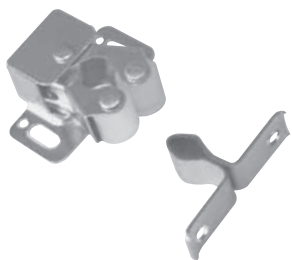


BRASS BALL CATCH

- Spring loaded steel balls
- Adjustable spring tension

| MODEL | FINISH | MATERIAL | A | B | C | /BOX |
|-------|----------------|----------|---|---------------------------|--------------------------|------|
| 112 | Polished brass | Brass | 1 ¹⁵ / ₁₆ (49.4) | 1/ ₂ (12.7) | 3/ ₈ (9.5) | 40 |

IN (MM)

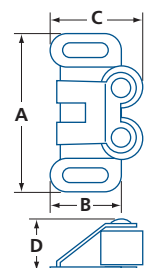


DOUBLE ROLLER CATCH

- Spring loaded plastic rollers
- Mounting hardware included: wood screws

| MODEL | FINISH | MATERIAL | A | B | C | D | /BOX |
|--------|-------------|----------|---|----------------------------|---|---------------------------|------|
| 3631ZP | Zinc plated | Steel | 1 ¹ / ₄ (31.8) | 9/ ₁₆ (14.3) | 1 ¹ / ₈ (28.6) | 5/ ₈ (15.9) | 100 |

IN (MM)



DOUBLE ROLLER CATCH WITH CLIP

- Plastic rollers
- Spring c-clip
- Mounting hardware included: wood screws

| MODEL | FINISH | MATERIAL | A | B | C | D | /BOX |
|--------|-------------|----------|---|---------------------------|--|---------------------------|------|
| 3632ZP | Zinc plated | Steel | 1 ¹¹ / ₁₆ (42.9) | 3/ ₄ (19.1) | 1 ⁵ / ₁₆ (23.8) | 1/ ₂ (12.7) | 100 |

IN (MM)

